

# Coppermills

2 bedroom Apartment

**Vauxhall Bridge Road, London, SW1V**

£2,650 Per month



A two bedroom top floor apartment close to River Thames, the green spaces on central London with St James park, and a gated community

Available from July.

To view this property  
[info@coppermills.co.uk](mailto:info@coppermills.co.uk)  
020 8509 9170

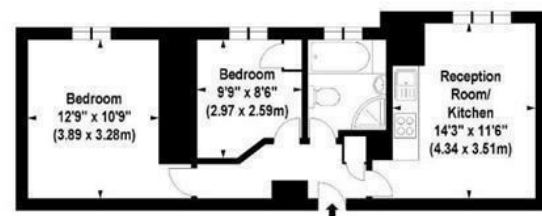


To view this property  
info@coppermills.co.uk  
020 8150 1177

## Vauxhall Bridge Road, London, SW1V



**Peabody Estate,  
Vauxhall Bridge Road, SW1**  
Approx. Gross Internal Area \*  
548 Sq Ft - 50.87 Sq M



Fourth Floor

Illustration For Identification Purposes Only. Not To Scale  
\*Floorplan Drawn According To RICS Guidelines  
© www.totalvista.co.uk 2010 (sa)



### EPC details

Energy Efficiency Rating		Current	Potential
Very energy efficient - lower running costs			
92-95 A			
81-91 B			
69-80 C			
55-65 D			
44-54 E			
35-43 F			
2-34 G			
Not energy efficient - higher running costs			
England & Wales		EU Directive 2002/91/EC	
Environmental Impact (CO <sub>2</sub> ) Rating		Current	Potential
Very environmentally friendly - lower CO <sub>2</sub> emissions			
92-95 A			
81-91 B			
69-80 C			
55-65 D			
44-54 E			
35-43 F			
2-34 G			
Not environmentally friendly - higher CO <sub>2</sub> emissions			
England & Wales		EU Directive 2002/91/EC	

# Coppermills

info@coppermills.co.uk  
T: 020 8150 1177  
M: 077 8217 0925  
www.coppermills.co.uk  
63 St James Street  
London E17 7PJ

You may download, store and use the material for your own personal use and research. You may not republish, retransmit, redistribute or otherwise make the material available to any party or make the same available on any website, online service or bulletin board of your own or of any other party or make the same available in hard copy or in any other media without the owner's express prior written consent. The owner's copyright must remain on all reproductions of material taken.